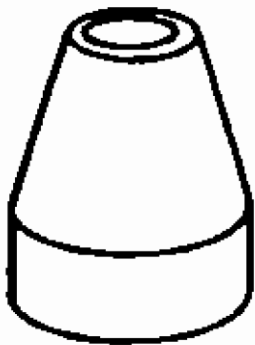
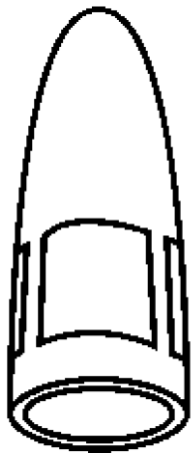
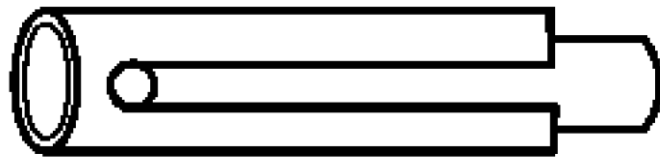




Look for high quality Sanrex consumable parts for your plasma welding torches.



SanRex



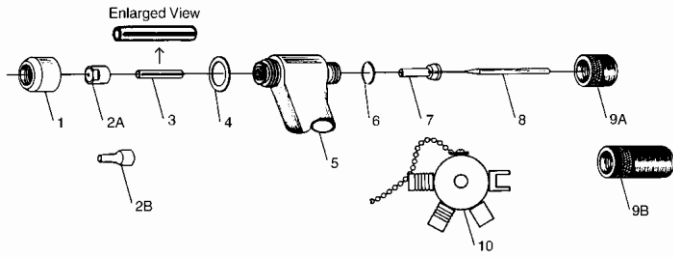
CONSUMABLES

ALWAYS BUY....

SanRex

Published 11/1/2024

CONSUMABLES

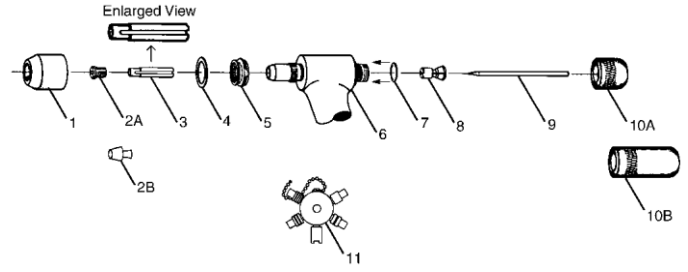


PWH/M P75 TORCH PARTS

Description	Diagram	
	Ref. No.	Part Number
P75 COMPLETE SPARE PARTS KIT		P75-2000
P75 - Torch Head Assembly (70 deg.)		P75-2001
P75 - Torch Head Assembly (90 deg.)		P75-2002
P75 - Torch Head Assembly (180 deg. offset)		P75-2003
P75 - Torch Leads w/out torch head 12.5 ft. / 3.8m		P75-2004
P75 - Torch Leads w/out torch head 25 ft. / 7.6m		P75-2005
P75 - Gauge and Wrench Assembly	1	P75-2006

PWH/M P75 TORCH PARTS

Description	Diagram	
	Ref. No.	Part Number
P75 - Shield Cup (use w/ ext. tip)	1*	P75-3000
P75 - Shield Cup (use w/ std. tip)	1*	P75-3001
P75 - Tip (.045) 35A - Std.	2A*	P75-3002
P75 - Tip (.062) 62A - Std.	2A*	P75-3003
P75 - Tip (.081) 75A - Std.	2A*	P75-3004
P75 - Tip (.031) 15A - ext.	2B*	P75-3005
P75 - Tip (.045) 25A - ext.	2B*	P75-3006
P75 - Tip (.062) 35A - ext.	2B*	P75-3007
P75 - Tip (.081) 50A - ext.	2B*	P75-3008
P75 - Electrode (.093) - std.	8-	P75-3009
P75 - Electrode (.093) - ext.	8-	P75-3010
P75 - Electrode (.040) - std.	8-	P75-3011
P75 - Electrode (.040) - ext.	8-	P75-3012
P75 - Gas Distributor (.093)	3	P75-3013
P75 - Gas Distributor (.040)	3	P75-3014
P75 - Gasket - Shield Cup	4-	P75-3015
P75 - O-Ring-Electrode Cap	6-	P75-3016
P75 - Collet (.093 Electrode)	7-	P75-3017
P75 - Collet (.040 Electrode)	7-	P75-3018
P75 - Electrode Cap - Standard	9A	P75-3019
P75 - Electrode Cap - Extended	9B	P75-3020

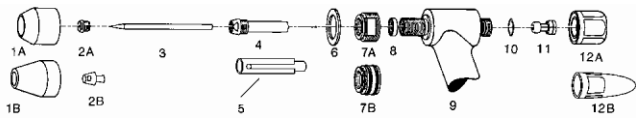


PWH/M P15 TORCH PARTS

Description	Diagram	
	Ref. No.	Part Number
P15 TORCH COMPLETE SPARE PARTS KIT		P15-2000
P15 - Torch Head Assembly (70 deg.)	6	P15-2001
P15 - Torch Head Assembly (90 deg.)	6	P15-2002
P15 - Torch Head Assembly (180 deg. offset)	6	P15-2003
P15 - Torch Leads w/out torch head 12.5 ft. /		P15-2004
P15 - Torch Leads w/out torch head 25 ft. / 7.6m		P15-2005
P15 - Gauge and Wrench Assembly	11	P15-2006
P15 - Quick Disconnect Only		P22-2012
P15 - PWH Handle		P75-3035

PWH/M P15 TORCH PARTS

Description	Diagram	
	Ref. No.	Part Number
P15 - Shield Cup Standard Weight	1*	P15-3000
P15 - Shield Cup - 8-3038 with Gas Lens	1*	P15-3001
P15 - Shield Cup Spot Welding	1*	P15-3002
P15 - Tip (.014) 10A - Std.	2A*	P15-3003
P15 - Tip (.022) 15A - Std.	2A*	P15-3004
P15 - Tip (.031) 30A - Std.	2A*	P15-3005
P15 - Tip (.046) 50A - Std.	2A*	P15-3006
P15 - Tip (.062) 75A - Std.	2A*	P15-3007
P15 - Tip (.081) 100A - Std.	2A*	P15-3008
P15 - Tip (.093) 130A - Std.	2A*	P15-3009
P15 - Tip (.031) 30A - ext.	2B*	P15-3010
P15 - Tip (.046) 50A - ext.	2B*	P15-3011
P15 - Tip (.062) 75A - ext.	2B*	P15-3012
P15 - Tip (.081) 100A - ext.	2B*	P15-3013
P15 - Tip (.093) 130A - ext.	2B*	P15-3014
P15 - Electrode (.093) - std.	9-	P15-3015
P15 - Electrode (.093) - ext.	9-	P15-3016
P15 - Gas Distributor insulating sleeve	3	P15-3017
P15 - Gasket - Shield Cup	4-	P15-3018
P15 - Shield Gas Diffuser	5*	P15-3019
P15 - O-Ring-Electrode Cap	7*	P15-3020
P15 - Collet	8-	P15-3021
P15 - Electrode Cap - Standard	10A	P15-3022
P15 - Electrode Cap - Extended	10B	P15-3023

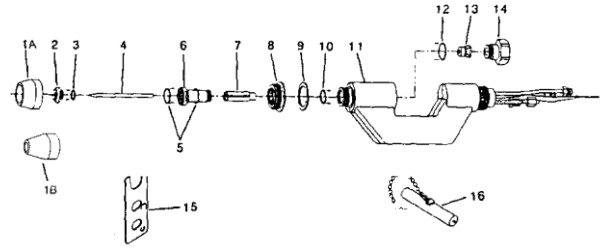


PWH/M P22 TORCH PARTS

Description	Diagram Ref. No.	Part Number
P22 TORCH COMPLETE SPARE PARTS KIT		P22-2000
P22 - Torch Head Assembly (70 deg.)	9	P22-2001
P22 - Torch Head Assembly (90 deg.)	9	P22-2002
P22 - Torch Head Assembly (180 deg. offset)	9	P22-2003
P22 - Torch Head Assembly (180 deg. inline)	9	P22-2004
P22 - Collar	8	P22-2005
P22 - Torch Leads w/out torch head 12.5 ft. /		P22-2006
P22 - Torch Leads w/out torch head 25 ft. / 7.6m		P22-2007
P22 - Gauge and Wrench Assembly		P22-3021
P22 - Service Tool Kit		N/A
P22 - Lubricant		PAW-LUBE
P22 - O-Ring Removal Tool		P22-2009
P22 - O-Ring Installation Tool		P22-2010
P22 - 7/16" Open End Wrench		P22-2011
P22 - Quick Disconnect Only		P22-2012
P22 - PWH Torch Handle		P22-2013

PWH/M P22 TORCH PARTS

Description	Diagram Ref. No.	Part Number
P22 - Shield Cup (use w/ ext. tip) - Threaded	1A*	P22-3000
P22 - Shield Cup (use w/ std. tip) - Slip On	1B*	P22-3001
P22 - Tip (.046) 50A - Std.	2A*	P22-3002
P22 - Tip (.062) 100A - Std.	2A*	P22-3003
P22 - Tip (.093) 125A - Std.	2A*	P22-3004
P22 - Tip (.125) 150A - Std.	2A*	P22-3005
P22 - Tip (.062) 100A - ext.	2B*	P22-3006
P22 - Tip (.093) 125A - ext.	2B*	P22-3007
P22 - Tip (.125) 150A - ext.	2B*	P22-3008
P22 - Electrode (.187) - std.	3-	P30-3008
P22 - Electrode (.187) - ext.	3-	P22-3010
P22 - Liner	4	P22-3011
P22 - Gas Distributor	5	P22-3012
P22 - Gasket - Shield Cup	6	P22-3013
P22 - Shield Gas Diffuser - Threaded	7A	P22-3014
P22 - Shield Gas Diffuser - Slip On	7B	P22-3015
P22 - O-Ring-Electrode Cap	10-	P22-3017
P22 - Collet	11-	P22-3018
P22 - Electrode Cap Standard	12	P22-3019
P22 - Electrode Cap - Extended	12	P22-3020



PWM-P30 TORCH PARTS

Description	Diagram Ref. No.	Part Number
PWM-300 TORCH COMPLETE SPARE PARTS KIT		P30-2000
Torch Body	11	P30-2001
Torch Leads w/out torch head 12.5 ft. / 3.8m		P30-2002
Torch Leads w/out torch head 25 ft. / 7.6m		P30-2003
Electrode Gauge	16	P30-2010
Lubricant		PAW-LUBE
Tip/Liner Wrench	15	P30-2011

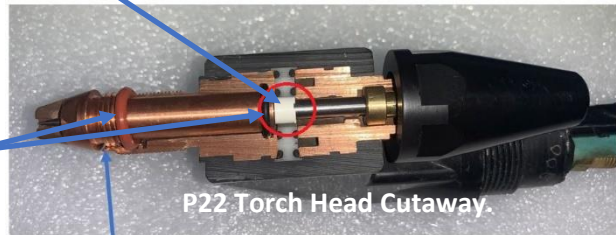
PWM-P30 TORCH PARTS

Description	Diagram Ref. No.	Part Number
Shield Cup - (brass)	1B	P30-3001
Tip (.093) 200A	2-	P30-3005
Tip (.113) 250A	2-	P30-3006
Tip (.125) 300A	2-	P30-3007
Electrode	4-	P30-3008
Liner	6	P30-3009
Gas Distributor Insulating Sleeve	7	P30-3010
Gasket - Shield Cup	9-	P30-3011
Shield Gas Diffuser	8	P30-3012
O-Ring-Electrode Cap	12-	P30-3013
Collet	13	P30-3014
Electrode Cap - Standard	14	P30-3015
O-Ring	3-	P30-3016
O-Ring	5-	P30-3017
O-Ring	10-	P30-3018
Shield Cup Ceramic (Adapter 8-6541)	1A*	P30-3019
Shield Adapter (for 8-6542 Cup)	8	P30-3020

PWH/M P22 Torch Assembly Shown. P75, P15, P30 similar assembly.

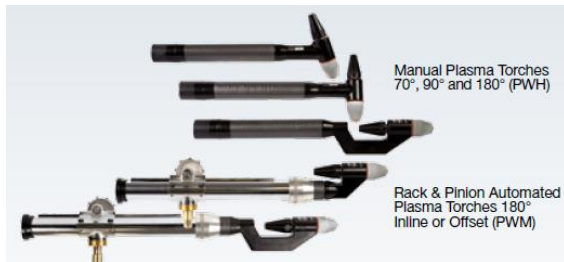


1. Cup
2. Standard Tip (Keyhole Process)
3. Extended Tip (Melt-in Process)
4. Electrode
5. Liner (Red and Black O-Ring inside of Torch).
6. Gas Distributor
7. Collar
8. Shield Gas Diffuser
9. Cup Gasket
10. Torch Head
11. Collet
12. Back Cap



P22 Torch Head Cutaway.

Stainless collar not shown.



Manual Plasma Torches
70°, 90° and 180° (PWH)

Rack & Pinion Automated
Plasma Torches 180°
Inline or Offset (PWM)

Torch configurations:

- Phenolic Handle or Rack and Pinion.
- 70°, 90°, 180° inline or offset head.

See Brochure for ordering information.

Note:

- Tip orifice designates current capability. The current rating on a tip is its maximum current capability.
- Electrode is 2% thoriated tungsten. The point is centered and machined at a specific angle. The use of TIG Tungsten can cause damage or failure to the torch. Hand grinding of the point will cause damage or failure of the torch.
- When in operation always:
 - Use two separate supplies of gas.
 - Purge before starting pilot.
 - Leave pilot on between welds and throughout the work shift.