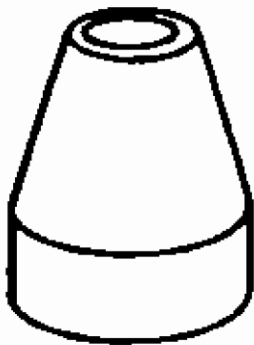
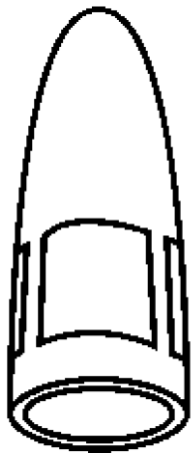
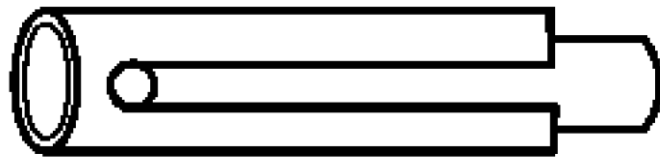




Look for high quality Sanrex consumable parts for your plasma welding torches.



SanRex

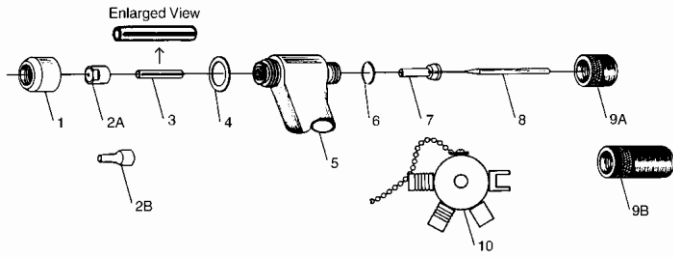


CONSUMABLES

ALWAYS BUY....

SanRex

CONSUMABLES

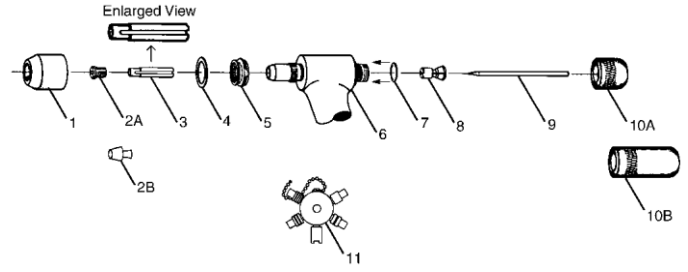


PWH/M P75 TORCH PARTS

Description	Diagram	
	Ref. No.	Part Number
P75 COMPLETE SPARE PARTS KIT		P75-2000
P75 - Torch Head Assembly (70 deg.)		P75-2001
P75 - Torch Head Assembly (90 deg.)		P75-2002
P75 - Torch Head Assembly (180 deg. offset)		P75-2003
P75 - Torch Leads w/out torch head 12.5 ft. / 3.8m		P75-2004
P75 - Torch Leads w/out torch head 25 ft. / 7.6m		P75-2005
P75 - Gauge and Wrench Assembly	1	P75-2006

PWH/M P75 TORCH PARTS

Description	Diagram	
	Ref. No.	Part Number
P75 - Shield Cup (use w/ ext. tip)	1*	P75-3000
P75 - Shield Cup (use w/ std. tip)	1*	P75-3001
P75 - Tip (.045) 35A - Std.	2A*	P75-3002
P75 - Tip (.062) 62A - Std.	2A*	P75-3003
P75 - Tip (.081) 75A - Std.	2A*	P75-3004
P75 - Tip (.031) 15A - ext.	2B*	P75-3005
P75 - Tip (.045) 25A - ext.	2B*	P75-3006
P75 - Tip (.062) 35A - ext.	2B*	P75-3007
P75 - Tip (.081) 50A - ext.	2B*	P75-3008
P75 - Electrode (.093) - std.	8-	P75-3009
P75 - Electrode (.093) - ext.	8-	P75-3010
P75 - Electrode (.040) - std.	8-	P75-3011
P75 - Electrode (.040) - ext.	8-	P75-3012
P75 - Gas Distributor (.093)	3	P75-3013
P75 - Gas Distributor (.040)	3	P75-3014
P75 - Gasket - Shield Cup	4-	P75-3015
P75 - O-Ring-Electrode Cap	6-	P75-3016
P75 - Collet (.093 Electrode)	7-	P75-3017
P75 - Collet (.040 Electrode)	7-	P75-3018
P75 - Electrode Cap - Standard	9A	P75-3019
P75 - Electrode Cap - Extended	9B	P75-3020

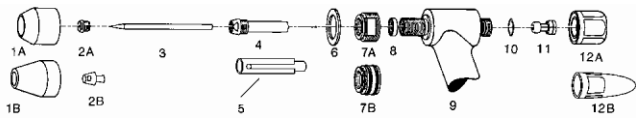


PWH/M P15 TORCH PARTS

Description	Diagram	
	Ref. No.	Part Number
P15 TORCH COMPLETE SPARE PARTS KIT		P15-2000
P15 - Torch Head Assembly (70 deg.)	6	P15-2001
P15 - Torch Head Assembly (90 deg.)	6	P15-2002
P15 - Torch Head Assembly (180 deg. offset)	6	P15-2003
P15 - Torch Leads w/out torch head 12.5 ft. /		P15-2004
P15 - Torch Leads w/out torch head 25 ft. / 7.6m		P15-2005
P15 - Gauge and Wrench Assembly	11	P15-2006
P15 - Quick Disconnect Only		P22-2012
P15 - PWH Handle		P75-3035

PWH/M P15 TORCH PARTS

Description	Diagram	
	Ref. No.	Part Number
P15 - Shield Cup Standard Weight	1*	P15-3000
P15 - Shield Cup - 8-3038 with Gas Lens	1*	P15-3001
P15 - Shield Cup Spot Welding	1*	P15-3002
P15 - Tip (.014) 10A - Std.	2A*	P15-3003
P15 - Tip (.022) 15A - Std.	2A*	P15-3004
P15 - Tip (.031) 30A - Std.	2A*	P15-3005
P15 - Tip (.046) 50A - Std.	2A*	P15-3006
P15 - Tip (.062) 75A - Std.	2A*	P15-3007
P15 - Tip (.081) 100A - Std.	2A*	P15-3008
P15 - Tip (.093) 130A - Std.	2A*	P15-3009
P15 - Tip (.031) 30A - ext.	2B*	P15-3010
P15 - Tip (.046) 50A - ext.	2B*	P15-3011
P15 - Tip (.062) 75A - ext.	2B*	P15-3012
P15 - Tip (.081) 100A - ext.	2B*	P15-3013
P15 - Tip (.093) 130A - ext.	2B*	P15-3014
P15 - Electrode (.093) - std.	9-	P15-3015
P15 - Electrode (.093) - ext.	9-	P15-3016
P15 - Gas Distributor insulating sleeve	3	P15-3017
P15 - Gasket - Shield Cup	4-	P15-3018
P15 - Shield Gas Diffuser	5*	P15-3019
P15 - O-Ring-Electrode Cap	7*	P15-3020
P15 - Collet	8-	P15-3021
P15 - Electrode Cap - Standard	10A	P15-3022
P15 - Electrode Cap - Extended	10B	P15-3023

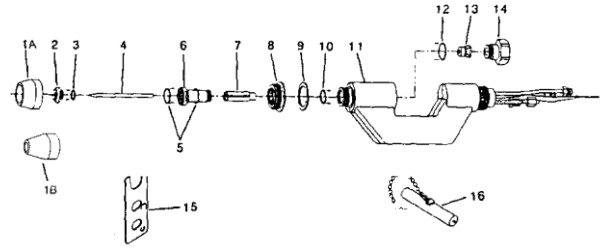


PWH/M P22 TORCH PARTS

Description	Diagram Ref. No.	Part Number
P22 TORCH COMPLETE SPARE PARTS KIT		P22-2000
P22 - Torch Head Assembly (70 deg.)	9	P22-2001
P22 - Torch Head Assembly (90 deg.)	9	P22-2002
P22 - Torch Head Assembly (180 deg. offset)	9	P22-2003
P22 - Torch Head Assembly (180 deg. inline)	9	P22-2004
P22 - Collar	8	P22-2005
P22 - Torch Leads w/out torch head 12.5 ft. /		P22-2006
P22 - Torch Leads w/out torch head 25 ft. / 7.6m		P22-2007
P22 - Gauge and Wrench Assembly		P22-2020
P22 - Service Tool Kit		N/A
P22 - Lubricant		PAW-LUBE
P22 - O-Ring Removal Tool		P22-2009
P22 - O-Ring Installation Tool		P22-2010
P22 - 7/16" Open End Wrench		P22-2011
P22 - Quick Disconnect Only		P22-2012
P22 - PWH Torch Handle		P22-2013

PWH/M P22 TORCH PARTS

Description	Diagram Ref. No.	Part Number
P22 - Shield Cup (use w/ ext. tip) - Threaded	1A*	P22-3000
P22 - Shield Cup (use w/ std. tip) - Slip On	1B*	P22-3001
P22 - Tip (.046) 50A - Std.	2A*	P22-3002
P22 - Tip (.062) 100A - Std.	2A*	P22-3003
P22 - Tip (.093) 125A - Std.	2A*	P22-3004
P22 - Tip (.125) 150A - Std.	2A*	P22-3005
P22 - Tip (.062) 100A - ext.	2B*	P22-3006
P22 - Tip (.093) 125A - ext.	2B*	P22-3007
P22 - Tip (.125) 150A - ext.	2B*	P22-3008
P22 - Electrode (.187) - std.	3-	P30-3008
P22 - Electrode (.187) - ext.	3-	P22-3010
P22 - Liner	4	P22-3011
P22 - Gas Distributor	5	P22-3012
P22 - Gasket - Shield Cup	6	P22-3013
P22 - Shield Gas Diffuser - Threaded	7A	P22-3014
P22 - Shield Gas Diffuser - Slip On	7B	P22-3015
P22 - O-Ring-Electrode Cap	10-	P22-3017
P22 - Collet	11-	P22-3018
P22 - Electrode Cap Standard	12	P22-3019
P22 - Electrode Cap - Extended	12	P22-3020



PWM-P30 TORCH PARTS

Description	Diagram Ref. No.	Part Number
PWM-300 TORCH COMPLETE SPARE PARTS KIT		P30-2000
Torch Body	11	P30-2001
Torch Leads w/out torch head 12.5 ft. / 3.8m		P30-2002
Torch Leads w/out torch head 25 ft. / 7.6m		P30-2003
Electrode Gauge	16	P30-2010
Lubricant		PAW-LUBE
Tip/Liner Wrench	15	P30-2011

PWM-P30 TORCH PARTS

Description	Diagram Ref. No.	Part Number
Shield Cup - (brass)	1B	P30-3001
Tip (.093) 200A	2-	P30-3005
Tip (.113) 250A	2-	P30-3006
Tip (.125) 300A	2-	P30-3007
Electrode	4-	P30-3008
Liner	6	P30-3009
Gas Distributor Insulating Sleeve	7	P30-3010
Gasket - Shield Cup	9-	P30-3011
Shield Gas Diffuser	8	P30-3012
O-Ring-Electrode Cap	12-	P30-3013
Collet	13	P30-3014
Electrode Cap - Standard	14	P30-3015
O-Ring	3-	P30-3016
O-Ring	5-	P30-3017
O-Ring	10-	P30-3018
Shield Cup Ceramic (Adapter 8-6541)	1A*	P30-3019
Shield Adapter (for 8-6542 Cup)	8	P30-3020

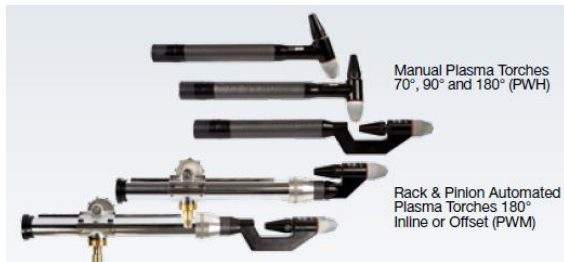
PWH/M P22 Torch Assembly Shown. P75, P15, P30 similar assembly.



1. Cup
2. Standard Tip (Keyhole Process)
3. Extended Tip (Melt-in Process)
4. Electrode
5. Liner (Red and Black O-Ring inside of Torch).
6. Gas Distributor
7. Collar
8. Shield Gas Diffuser
9. Cup Gasket
10. Torch Head
11. Collet
12. Back Cap



Stainless collar not shown.



Torch configurations:

- Phenolic Handle or Rack and Pinion.
- 70°, 90°, 180° inline or offset head.

See Brochure for ordering information.

Note:

- Tip orifice designates current capability. The current rating on a tip is its maximum current capability.
- Electrode is 2% thoriated tungsten. The point is centered and machined at a specific angle. The use of TIG Tungsten can cause damage or failure to the torch. Hand grinding of the point will cause damage or failure of the torch.
- When in operation always:
 - Use two separate supplies of gas.
 - Purge before starting pilot.
 - Leave pilot on between welds and throughout the work shift.